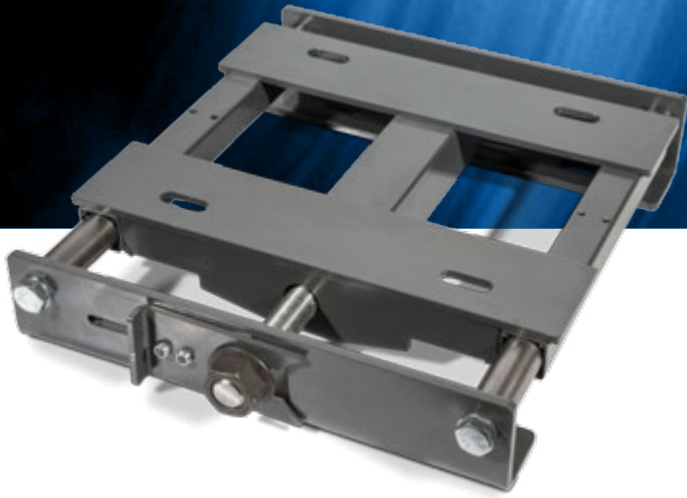


The Browning logo is written in a red, cursive script font with a registered trademark symbol.

## Browning® Tenso-set™ Self-Tensioning Motor Base

The new Browning Tenso-set Series 600 horizontal sliding motor base with optional quick release (QR) is an industry first for V-belt drives, enhancing technician convenience and belt drive efficiency by automatically maintaining belt tension for extended periods and allowing quick belt changes in just minutes.

### **BENEFITS**

- Significantly reduces time required to change v-belts
- Promotes greater efficiency by constantly maintaining v-belt tension
- Tube rail and one-piece carriage design promotes and maintains superior drive alignment
- Improved safety. No need to cut off belts or roll them onto sheaves



*Browning Optimized 2 groove 5VX Solution: \$1224*



*Constant spring tension automatically compensates for belt wear and reduces frequency of belt adjustments*

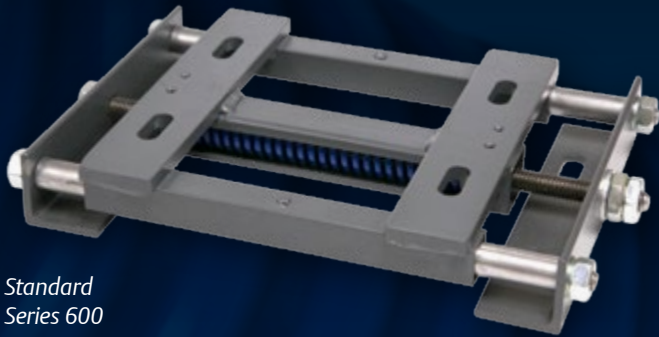
# TENSO SET

**REGAL**

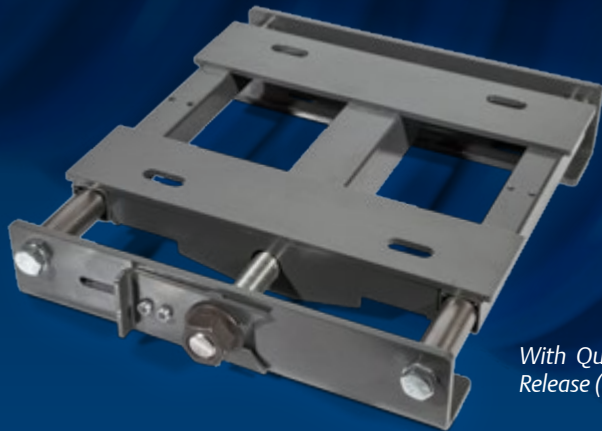
# Tenso-set™ Series 600 Auto-Tensioning Motor Base

## Functionality:

1. Closed latch and operating position
2. De-tensioned drive allows release lever gate to slide open
3. Motor carriage slides forward and tensioning bolt passes through frame allowing a significant reduction in time required to safely change v-belts and maintenance system



Standard  
Series 600



With Quick  
Release (QR)

**Browning**

Regal Power Transmission Solutions  
7120 New Buffington Rd  
Florence, KY 41042  
Customer Service: 800-626-2120  
Fax: 800-262-3292  
Technical Service: 800-626-2093

[www.RegalPTS.com/HVAC](http://www.RegalPTS.com/HVAC)

## APPLICATION CONSIDERATIONS

The proper selection and application of power transmission products and components, including the related area of product safety, is the responsibility of the customer. Operating and performance requirements and potential associated issues will vary appreciably depending upon the use and application of such products and components. The scope of the technical and application information included in this publication is necessarily limited. Unusual operating environments and conditions, lubrication requirements, loading supports, and other factors can materially affect the application and operating results of the products and components and the customer should carefully review its requirements. Any technical advice or review furnished by Regal Beloit America, Inc. and its affiliates with respect to the use of products and components is given in good faith and without charge, and Regal assumes no obligation or liability for the advice given, or results obtained, all such advice and review being given and accepted at customer's risk.

For a copy of our Standard Terms and Conditions of Sale, Disclaimers of Warranty, Limitation of Liability and Remedy, please contact Customer Service at 1-800-626-2120. These terms and conditions of sale, disclaimers and limitations of liability apply to any person who may buy, acquire or use a Regal Beloit America Inc. product referred to herein, including any person who buys from a licensed distributor of these branded products.

NEMA Base - Self-Adjusting			
Part Description	Base Number	NEMA Frame	HP Cap. 1800 or Equivalent
BSAMBN601	601	48-56	1
BSAMBN605	605	143-145	2
BSAMBN607	607	182-184	5
BSAMBN613	613	213-215	10
BSAMBN621	621	254-256	20
BSAMBN623	623	284-286	30
BSAMBN925	DX925	324-326	50
BSAMBN927	DX927	364-365	75
BSAMBN929	DX929	404-405	100
BSAMBN931	DX931	444-445	150
BSAMBN933	DX933	447	200

NEMA Base - Quick Release Self-Adjusting			
Part Description	Base Number	NEMA Frame	HP Cap. 1800 or Equivalent
BSAMBN601QR	601	48-56	1
BSAMBN605QR	605	143-145	2
BSAMBN607QR	607	182-184	5
BSAMBN613QR	613	213-215	10
BSAMBN621QR	621	254-256	20
BSAMBN623QR	623	284-286	30

IEC Base - Self-Adjusting			
Part Description	Base Number	IEC Frame	HP Cap. 1800 or Equivalent
BSAMBI601	601	N/A	N/A
BSAMBI605	605	90S-90L	2
BSAMBI607	607	112S-112M	5
BSAMBI613	613	132S-132M	10
BSAMBI621	621	160M-160L	20
BSAMBI623	623	180M-180L	30
BSAMBI925	DX925	200M-200L	50
BSAMBI927	DX927	225S-225M	75
BSAMBI929	DX929	250S-250M	100
BSAMBI931	DX931	280S-280M	150

IEC Base - Quick Release Self-Adjusting			
Part Description	Base Number	IEC Frame	HP Cap. 1800 or Equivalent
BSAMBI601QR	601	N/A	N/A
BSAMBI605QR	605	90S-90L	2
BSAMBI607QR	607	112S-112M	5
BSAMBI613QR	613	132S-132M	10
BSAMBI621QR	621	160M-160L	20
BSAMBI623QR	623	180M-180L	30

**REGAL**