

Ratio Options	1
1PD09	
2.00 Dec.	
1.70 Dec.	
1.40 Dec.	
1.30 Dec.	
1.20 Dec.	
1.12 Dec.	
1:1	
1:12 hc.	
1:20 hc.	
1:30 hc.	
1:40 hc.	
1:70 hc.	
2.00 hc.	

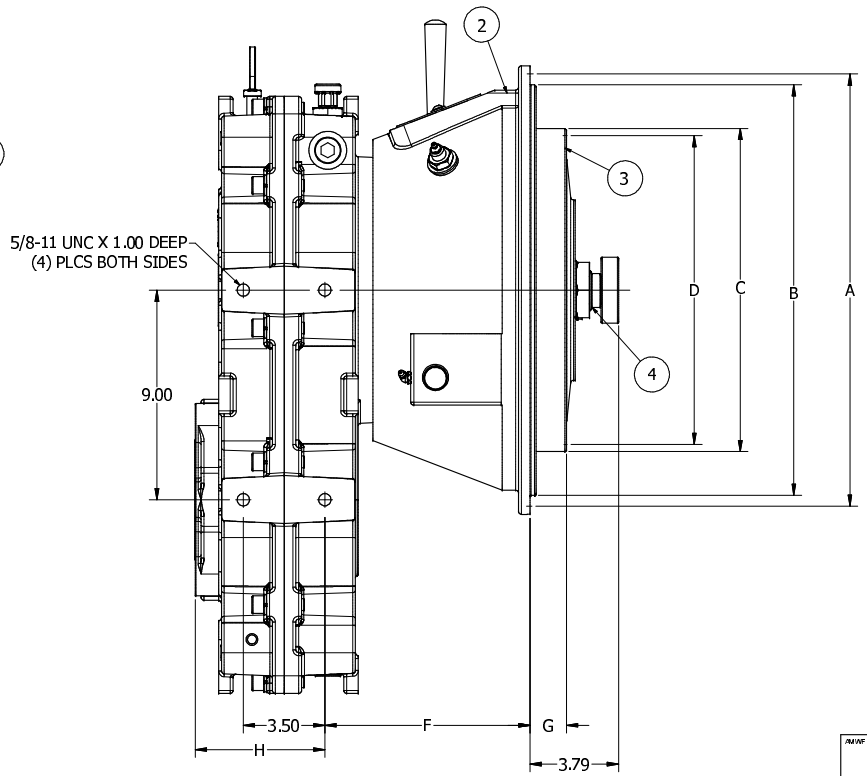
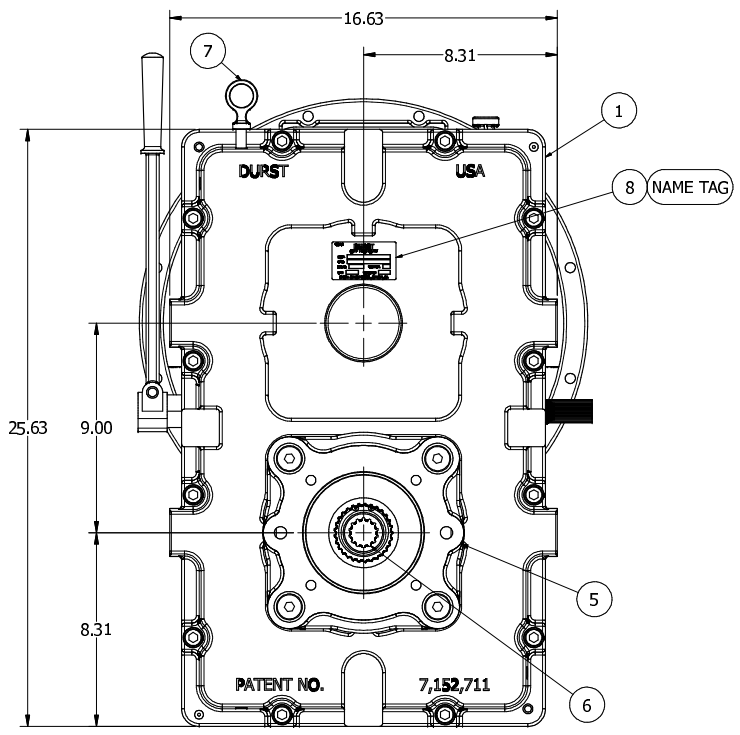
SAE Clutch Housing Options				2
SAE No.	Dim. A	Dim. B	Bolt Size & Qty.	
1	20.875	20.125	7/16-14 (12)	
2	18.375	17.625	3/8-16 (12)	
3	16.875	16.125	3/8-16 (12)	

SAE Clutch Options						3
Clutch No.	Dim. C	Dim. D	Dim. F	Dim. G	Bolt Size & Qty.	
SP214	18.375	17.250	10.77	1.00	(8) 17/32	
SP211	13.875	13.125	8.25	1.56	(8) 13/32	
NOT AVAILABLE						
C111	13.875	13.125	8.25	1.56	(8) 13/32	
C110	12.375	11.625	8.25	2.12	(8) 13/32	

Pilot Bearing	
Std. Bearing No.	Dim. E
6407 ZZ	3.9370
6307 ZZ	3.1496
6207 ZZ	2.8346

SAE Pump Pad Adapters					4
SAE Size	Bolt Size & Qty.	Bolt Circle	Pilot Dia.	Dim. H	
A	3/8-16 (2)	4.187	3.25	6.13	
B	1/2-13 (2)	5.750	4.00	6.13	
	1/2-13 (4)	5.000	4.00	6.13	
C	5/8-11 (2)	7.125	5.00	6.13	
	1/2-13 (4)	6.375	5.00	6.13	
D	3/4-10 (4)	9.000	6.00	6.13	
D2	3/4-10 (2)	9.000	6.00	6.25	
E	3/4-10 (4)	12.500	6.50	6.25	
F	1.00-8 (4)	13.781	7.00	6.63	

SAE Pump Spine Adapters		5
SAE Size	Teeth & Pitch	
A	9T-16/32	
B	13T-16/32	
BB	15T-16/32	
C	14T-12/24	
CC	17T-12/24	
D	13T-8/16	
F	15T-8/16	
21	21T-16/32	
23	23T-16/32	
27	27T-16/32	



- NOTES:
- 1) REFER TO ASSEMBLY BOOK FOR ADAPTER MOD DRAWINGS.
 - 2) LUBRICATE ALL O-RINGS PRIOR TO INSTALLATION.
 - 3) USE LOCTITE 680 WHEN INSTALLING EXPANSION PLUG P/N 012043.
 - 4) USE LOCTITE 680 WHEN INSTALLING DIPSTICK, AND DIPSTICK HOLE PLUG, P/N 012326.
 - 5) DO NOT USE LOCTITE ON FLAT HEAD PUMP PAD SCREWS.
 - 6) TIGHTEN 1/2" SCREWS: 105 FT-LBS.
 - 7) TIGHTEN 5/8" SCREWS: 210 FT-LBS.
 - 8) OIL MUST MEET API GL-5 SPEC: 80W90, EP90 OR EQUIVALENT.
 - 9) WHEN ORDERING PARTS REFER TO THE DURST SERVICE MANUAL.

PATENT NO. 7,152,711

CAUTION
Always insure that your powertrain is free of torsional vibrations. DURST is not responsible for damage or failure due to unaddressed torsional vibrations.

1 30731		RELEASED TO PRODUCTION	MEM	5/11/11	DRAWN BY	DATE	SCALE	3/8:1	THIRD ANGLE PROJECT	PART NO.	1PD09C	SIZE	D
<p>ALL DIMENSIONS IN INCHES UNLESS OTHERWISE SPECIFIED. ALLOW 0.005 TOLERANCE ON MACHINED SURFACES. FILLETS AND RADIUS TO MATCH MACHINING TOLERANCES. X = 0.030 FRAC = 1/64 XX = 0.010 ANGLE = 37 3/32 = 0.005 1/4" FINISH MODS. WHERE USED N/A</p> <p>THIS PRINT IS CONFIDENTIAL AND IS THE PROPERTY OF DURST, DIV. OF REGAL BELOFT CORP. THIS PRINT SHALL NOT BE USED, COPIED, OR REPRODUCED IN WHOLE OR IN PART. NOR SHALL THE CONTENTS BE REVEALED IN ANY MANNER TO ANYONE UNLESS WRITTEN PERMISSION IS OBTAINED FROM DURST, DIV. OF REGAL BELOFT CORP.</p> <p>MATERIAL: _____</p> <p>DURST DIVISION OF REGAL BELOFT CORP. P.O. BOX 230 BLOOMINGTON, IN 47401</p>													