

Ratio Options	1
4PD09	
1.40 Dec.	
1.30 Dec.	
1.20 Dec.	
1:1	
1.20 Inc.	
1.30 Inc.	
1.40 Inc.	
1.70 Inc.	

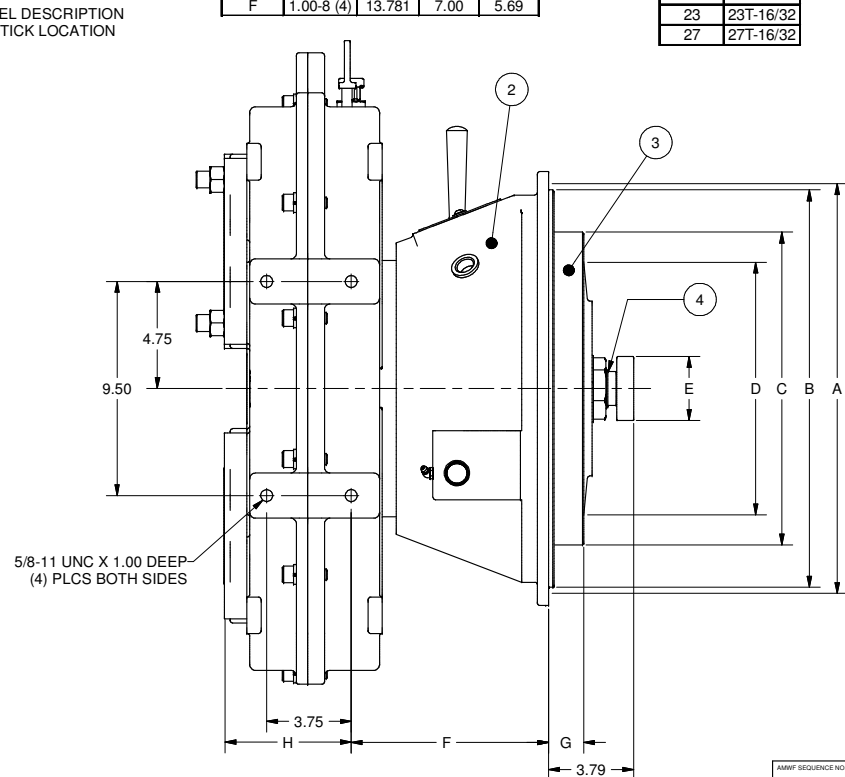
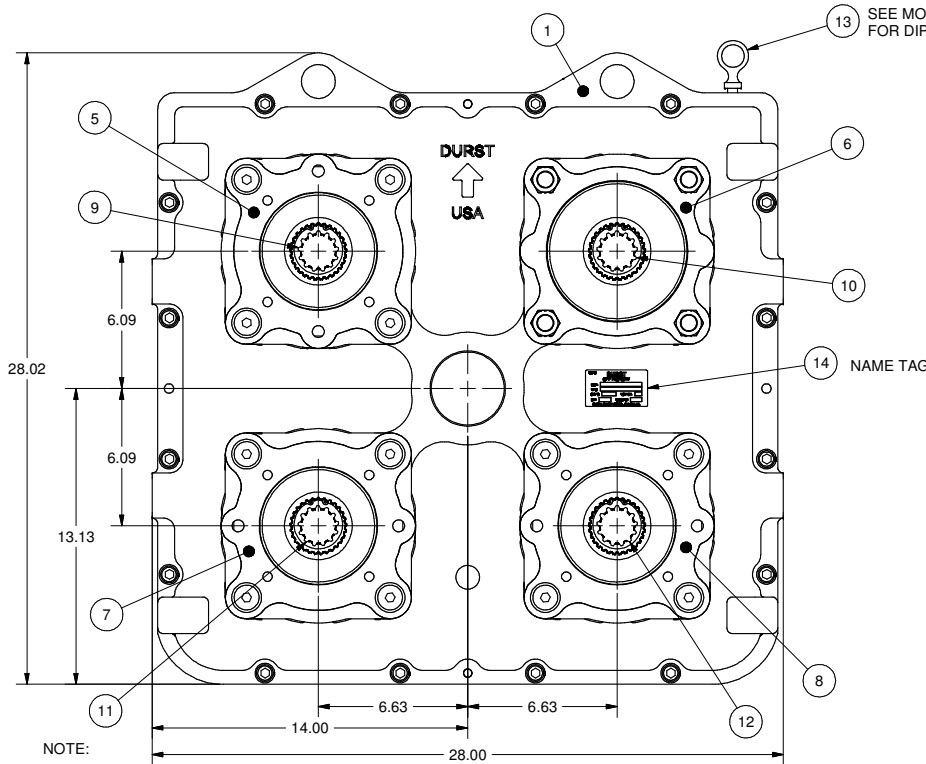
SAE Clutch Housing Options				2
SAE No.	Dim. A	Dim. B	Bolt Size & Qty.	
1	20.875	20.125	7/16-14 (12)	
2	18.375	17.625	3/8-16 (12)	
3	16.875	16.125	3/8-16 (12)	

SAE Clutch Options						3
Clutch No.	Dim. C	Dim. D	Dim. F	Dim. G	Bolt Size & Qty.	
SP214	18.375	17.250	11.62	1.00	(8) 17/32	
SP211	13.875	13.125	8.75	1.56	(8) 13/32	
SP114	18.375	17.250	8.75	1.00	(8) 17/32	
C111	13.875	13.125	8.75	1.56	(8) 13/32	
C110	12.375	11.625	8.75	2.12	(8) 13/32	

Pilot Bearing	
Std. Bearing No.	Dim. E
6407 ZZ	3.9370
6307 ZZ	3.1496
6207 ZZ	2.8346

SAE Pump Pad Adapters					5	6	7	8
SAE Size	Bolt Size & Qty.	Bolt Circle	Pilot Dia.	Dim. H				
A	3/8-16 (2)	4.187	3.25	5.19				
B	1/2-13 (2)	5.750	4.00	5.19				
B	1/2-13 (4)	5.000	4.00	5.19				
C	5/8-11 (2)	7.125	5.00	5.19				
C	1/2-13 (4)	6.375	5.00	5.19				
D	3/4-10 (4)	9.000	6.00	5.19				
D2	3/4-10 (2)	9.000	6.00	5.31				
E	3/4-10 (4)	12.500	6.50	5.31				
F	1.00-8 (4)	13.781	7.00	5.69				

SAE Pump Spline Adapters		9	10	11	12
SAE Size	Teeth & Pitch				
A	9T-16/32				
B	13T-16/32				
BB	15T-16/32				
C	14T-12/24				
CC	17T-12/24				
D	13T-8/16				
F	15T-8/16				
21	21T-16/32				
23	23T-16/32				
27	27T-16/32				



- NOTE:
- REFER TO ASSEMBLY BOOK FOR ADAPTER MOD DRAWINGS.
 - LUBRICATE ALL ORINGS PRIOR TO INSTALLATION.
 - APPLY SILVER STREAK #200S TO EXTERNAL SPLINES OF INPUT SHAFT.
 - USE LOCTITE 609 WHEN INSTALLING EXP. PLUG, P/N 012043.
 - USE LOCTITE 609 WHEN INSTALLING DIPSTICK, AND DIPSTICK HOLE PLUG, P/N 012326.
 - DO NOT USE LOCTITE ON PUMP PAD SCREWS.
 - TIGHTEN 1/2" SCREWS: 105 FT.LBS.
 - TIGHTEN 5/8" SCREWS: 210 FT.LBS.
 - OIL MUST MEET API GL-5 SPEC: 80W90, EP90 OR EQUIVALENT.
 - WHEN ORDERING PARTS REFER TO THE DURST SERVICE MANUAL.

PATENT NO. 7,152,711

CAUTION

Always insure that your powertrain is free of torsional vibrations. DURST is not responsible for damage or failure due to unaddressed torsional vibrations.

REV	W.O. NO.	ZONE	DESCRIPTION	BY	DATE	WHERE USED
4	30214		DIM "F" FOR SP214 WAS 11.70, ALL OTHER DIMS "F" WERE 9.19	WEM	9/21/10	
3	27454		ADDED INSTALLATION DIMENSIONS	WEM	6/14/07	
2	27444		REVISE NOTE 9, ADD PATENT NO.	WEM	6/5/07	
1	26290		RELEASED TO PRODUCTION	TMS	6/2/05	

ALL DIMENSIONS IN INCHES UNLESS OTHERWISE SPECIFIED: DIMENSIONS ALLOWED TYPICAL STOCK ON MACHINED SURFACES. FILETS AND RADIUS 0.125 MAX. MACHINING TOLERANCES: X ± 0.005 FRACTION ± 1/64 XX ± 0.010 ANGLE ± 30' XXX ± 0.005 FINISH		THIS PRINT IS CONFIDENTIAL AND IS THE PROPERTY OF DURST, DIV. OF REGAL BELT CO. THIS PRINT SHALL NOT BE USED, COPIED, OR REPRODUCED IN WHOLE OR IN PART. NCR SHALL THE CONTENTS BE REVEALED IN ANY MANNER TO ANYONE, UNLESS WRITTEN PERMISSION IS OBTAINED FROM DURST, DIV. REGAL BELT CO. P.	MATERIAL:	TITLE: 4PD09 CLUTCH CHARTED DRAWING	PART NO: 4PD09C	SCALE: 3:8	THIRD ANGLE PROJECT
4	3						

DURST
DIVISION OF REGAL BELT CORP.
P.O. BOX 208
BELLEVILLE, WISCONSIN 53511

SHEET 1 OF 1