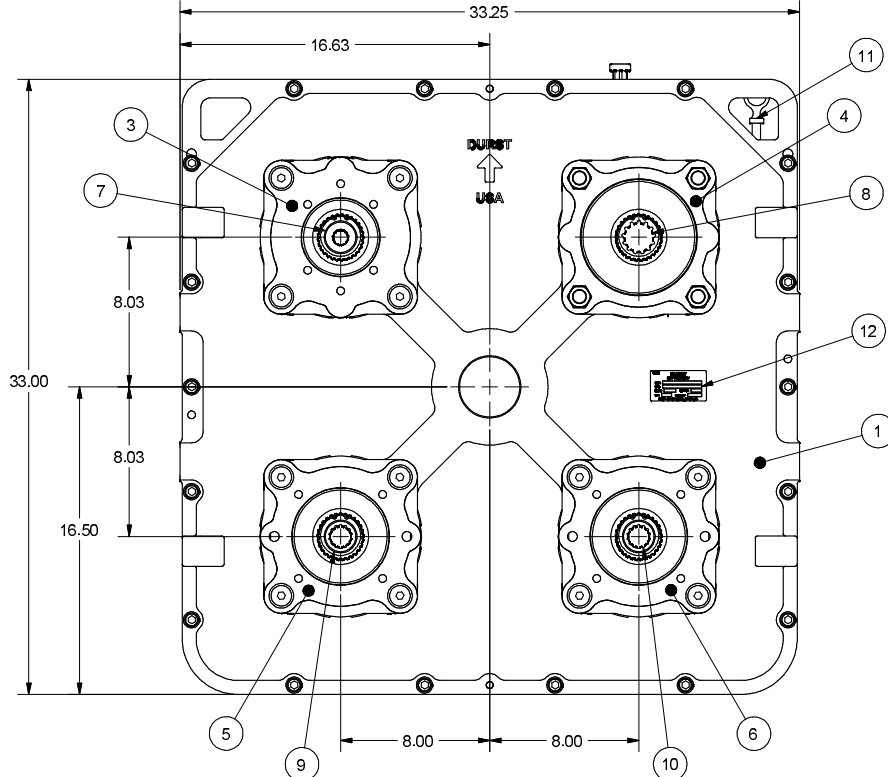


Ratio Options	1
4PD11	
1.39 Dec.	
1.31 Dec.	
1.16 Dec.	
1:1	
1.16 Inc.	
1.31 Inc.	
1.39 Inc.	

Input Shaft Options		2
Shaft Description	Dim. F	
1810 Companion	2.62	
1610 Companion	2.62	
2-1/2 Dia. Keyed	3.25	
2-1/4 Dia. Keyed	3.25	
29T-12/24	3.80	
20T-10/20	3.80	
15T-8/16	3.80	
1550 Companion	2.62	

SAE Pump Pad Adapters					3	4	5	6
SAE Size	Bolt Size & Qty.	Bolt Circle	Pilot Dia.	Dim. H				
A	3/8-16 (2)	4.187	3.25	7.63				
B	1/2-13 (2)	5.750	4.00	7.63				
B	1/2-13 (4)	5.000	4.00	7.63				
C	5/8-11 (2)	7.125	5.00	7.63				
C	1/2-13 (4)	6.375	5.00	7.63				
D	3/4-10 (4)	9.000	6.00	7.63				
D2	3/4-10 (2)	9.000	6.00	7.75				
E	3/4-10 (4)	12.500	6.50	7.75				
F	1.00-8 (4)	13.781	7.00	8.13				

SAE Pump Spline Adapters		7	8	9	10
SAE Size	Teeth & Pitch				
A	9T-16/32				
B	13T-16/32				
BB	15T-16/32				
C	14T-12/24				
CC	17T-12/24				
D	13T-8/16				
F	15T-8/16				
21	21T-16/32				
23	23T-16/32				
27	27T-16/32				

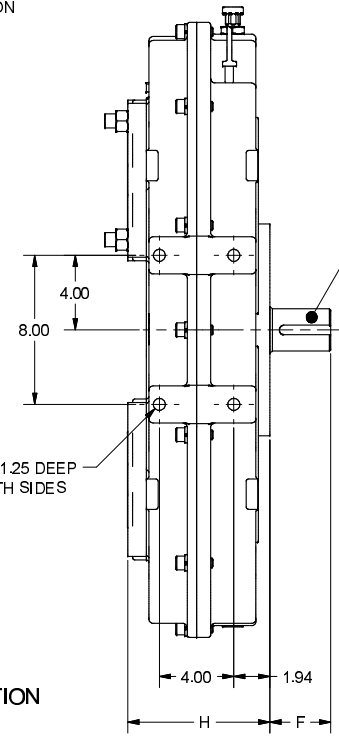


- NOTE:
- 1) REFER TO ASSEMBLY BOOK FOR ADAPTER MOD DRAWINGS.
 - 2) LUBRICATE ALL ORINGS PRIOR TO INSTALLATION.
 - 3) APPLY SILVER STREAK #200S TO EXTERNAL SPLINES OF INPUT SHAFT.
 - 4) USE LOCTITE 609 WHEN INSTALLING EXP. PLUG, P/N 012043.
 - 5) USE LOCTITE 609 WHEN INSTALLING DIPSTICK, AND DIPSTICK HOLE PLUG, P/N 012326.
 - 6) DO NOT USE LOCTITE ON PUMP PAD SCREWS.
 - 7) TIGHTEN 1/2" SCREWS: 105 FT.LBS.
 - 8) TIGHTEN 5/8" SCREWS: 210 FT.LBS.
 - 9) OIL MUST MEET API GL-5 SPEC: 80W90, EP90 OR EQUIVALENT.
 - 10) WHEN ORDERING PARTS REFER TO THE DURST SERVICE MANUAL.

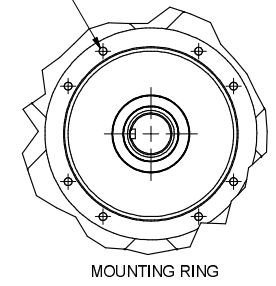
PATENT NO. 7,152,711

CAUTION
Always insure that your powertrain is free of torsional vibrations. DURST is not responsible for damage or failure due to unaddressed torsional vibrations.

NOTE:
PUMP ROTATION IS OPPOSITE ENGINE ROTATION



1/2-13 UNC X .88 FULL TH'D ON Ø10.25 B.C. (8) PLCS LOCATED EVERY 30° AS SHOWN.



REF

5		UPDATE DRAWING	WEM	8/1/07	<small>ALL DIMENSIONS IN INCHES UNLESS OTHERWISE SPECIFIED. DECIMALS ALLOW 12 FINISH STOCK ON MACHINED SURFACES. RILETS AND RADII 12 MAX. MACHINING TOLERANCES: X = .00 FRC = .004 XX = .00 ANGLE = 30 3304-1005 20 FINISH</small>	<small>THIS PRINT IS CONFIDENTIAL AND IS THE PROPERTY OF DURST. DM REGAL BELLOF CORP. THIS PRINT SHALL NOT BE USED, COPIED, OR REPRODUCED IN WHOLE OR IN PART, NOR SHALL THE CONTENTS BE REVEALED IN ANY MANNER TO ANYONE UNLESS WRITTEN PERMISSION IS OBTAINED FROM DURST. DM REGAL BELLOF CORP.</small>	<small>THIS PRINT IS CONFIDENTIAL AND IS THE PROPERTY OF DURST. DM REGAL BELLOF CORP. THIS PRINT SHALL NOT BE USED, COPIED, OR REPRODUCED IN WHOLE OR IN PART, NOR SHALL THE CONTENTS BE REVEALED IN ANY MANNER TO ANYONE UNLESS WRITTEN PERMISSION IS OBTAINED FROM DURST. DM REGAL BELLOF CORP.</small>	<small>UNLESS OTHERWISE SPECIFIED: MATERIAL</small>	<small>UNLESS OTHERWISE SPECIFIED: TITLE</small>	<small>UNLESS OTHERWISE SPECIFIED: PART NO.</small>	<small>UNLESS OTHERWISE SPECIFIED: SHEET NO.</small>
4		REVISE NOTE 9, ADD PATENT NO.	WEM	05/07							
3		UPDATED SPLINE CHART	NJS	11/05/04							
2		UPDATED NOTES	NJS	10/12/04							
1		RELEASED TO PRODUCTION	NJS	8/27/04							
REV	W.O. NO.	ZONE	BY	DATE	<small>DRAWN BY</small> NJS	<small>DATE</small> 8/27/04	<small>SCALE</small> 3 : 8	<small>THIRD ANGLE PROJECT</small>	<small>TITLE</small> 4PD11 INDEPENDENT CHARTED DRAWING	<small>PART NO.</small> 4PD11	<small>SHEET NO.</small> SEE 0

BHEET.1 OF 1

DURST
DIVISION OF REGAL BELLOF CORP.
P.O. BOX 290
BLOOMINGTON, IN 47403